



Produced by Dwellingup Primary School

July 20th 2018

Established 1911

"Choose Respect"

Farewell

Dates to Remember:

Fri 20th July: Retro Bingo Night

Mon 23rd July: Scitech K-PP

Thurs 26th July: K/PP Assembly

Fri 27th July: School Dentist Checks (PP & yr 6)

Mon 30th Jul: PEAC Testing

Wed 1st Aug: Tile Making Workshop (selected students)

Wed 1st Aug: Business Workshop 5.00pm

Thurs 9th Aug: Yrs 1/2/3 Assembly

Fri 17th Aug: Free Dress RSPCA

Sat 18th Aug: Dwellingup W.A. 100

Thurs 23rd Aug: Yrs 4/5/6 Assembly

Tues 28th Aug: Book Character Dress Up Day

Tues 28th Aug: Author visit: Yrs 4/5/6

Fri 31st Aug: faction Sports

Tues 11th Sept: Interschool Jumps & Throws school oval

Thurs 13th Sept: Interschool Track & Field town oval

Fri 21st Sept: Last day of term. free dress

Weekly Events at D.P.S.

Wed: Playgroup 9.00-11.00am

Educational Websites at DPS:

www.mathletics.com.au

www.studyladder.com.au

www.mylexile.com.au

Welcome Lotu!

We welcome **Lotu** to our K/PP class. We also welcome his parents **David and Tina** and his younger siblings to our community.



*Left:
Last day
at school
for
Karly,
Lara
and
Holley.*

We farewell **Holley, Karly and Lara Goncalves** from our school. We wish the girls and their parents **Dave and Rachael** and little sister **Bella** all of the very best in their exciting move to Narrogin. **Dave and Rachel** will shortly open the **Happy Days** café in Narrogin. We wish them every success with this venture.

The girls have a long family association with Dwellingup P.S. **Dave and Rachael** both attended school here as did Dave's mother **Lorralea** and grandmother **Lorrel Flatt**.

We also farewell **Hunter & Axel Ayres**. (picture next page). We wish **Cassie, Mat and Jet** (and their new baby) all the best in Mandurah.

"How lucky I am to have something that makes saying goodbye so hard." ~ Carol Sobieski and Thomas Meehan, Annie

Farewell!

“Choose Respect” Marble in Jar Certificates

Axel & Hunter Ayres ~ For being fantastic students during your time at Dwellingup P.S. Good luck in your new school!

Luca Birmingham ~ For working enthusiastically at all times and with anyone in the class. Great job Luca!

CONGRATULATIONS!



Left: Hunter & Axel

Below: Luca



Virtue: Co-Operation

“I am co-operative. I work and play well with others. I respect rules. I keep myself and others safe.”

You are practising co-operation when you:

- Work well with others.
- Freely offer your help and ideas.
- Follow the rules.
- Do your part to keep a safe and happy environment.
- When you disagree, do it peacefully.
- Ask for help when you need it.



School Development Day

On Monday's School Development Day staff were involved in professional learning that supports continued improvement in our practice. Teachers from Serpentine Primary School travelled to Dwellingup and together we completed a workshop titled **“Lead and Inspire”**. This workshop focussed on how staff can more effectively organise their time to cater for the increasing demands of our profession. It also dealt with aspects of staff health and well-being.

Staff also received professional learning in the **Brightpath** Writing assessment strategy. Numerous national and international studies have shown that effective assessment is central to improved student learning. **Brightpath** is based on a decade of pioneering research into educational assessment carried out at the University of Western Australia. Basically, teachers assess student's Writing by comparing a Writing sample with calibrated exemplars. Software automatically provides a scaled score. Students' strengths and weaknesses are indicated and planning for improvement for each student then occurs.

We also reviewed our School Plan and fine-tuned events happening this term. The day was very productive.

Years 4/5/6 Assembly

On the last Thursday of last term the year 4/5/6 class entertained us with a play titled **“World Cooking Championships”**. The cooking challenge took us to a variety of countries and our mouths were watering when the various dishes were being described. The accents and costumes from each country “visited” added authenticity.



Choir

Sharona Bower is taking choir with students in years 2-6 after lunch on Wednesdays. The session runs for half an hour. This week students practised the School Song and then commenced learning “The Lion Sleeps Tonight”.



Science Grant - \$10 000

Last term our school applied for a small school's Science grant. We found out at the end of last term that we were successful.

Mrs Livissianos has drawn up a very comprehensive list of resources to support the teaching of Science in the school.

National Resource Management Grant

At the end of last year an application for a \$5000 grant to enhance / rehabilitate our bushland at the back of the school was approved. This year students have been working on a project titled “Dwellingup PS Bush Trail Enquiry”. This week, the money has finally come through so we can commence our upgrade of the area.

P&C Classroom Support

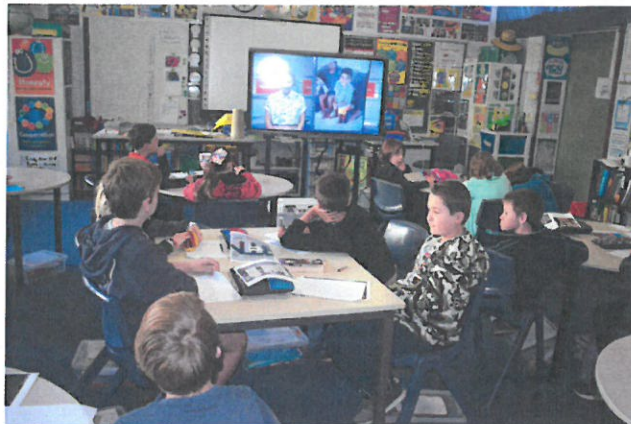
At the end of last term, each class was presented with \$1000 to spend on teaching materials. Teachers have had a fantastic time purchasing resources that will enhance their teaching programmes. We thank the P&C for their generosity.



Above: The year 1/2/3 students have these exciting new Writing prompts as well as other resources.

e-Boards

Classes commenced the term with a stunning e-Board each. These sensational learning aids were also funded by our P&C. All of the hard work that goes into the Pumpkin Festival certainly supports our student leaning. Thank you!



A Smile As Sparkly As the Picture!



Above: Anika made this wonderful collage of the Sydney Opera House and added some fireworks! Isn't it fabulous!

Friday Afternoon Art / Dance and Computer

Every Friday afternoon students in years PP/1 & 2 finish off the week being creative. Their portfolios contain some sensational work. On the left is a picture of a dandelion. Thank you to **Mrs Kinal**, **Mrs Bell**, **Mrs Wagenaar** and volunteer **Lainee Vanelst** for putting so much effort into this session.



Alcoa Community Action Grant

Thank you to **Alcoa** for making **Community Action Grants** available. Alcoa workers volunteer their time and the recipient organisation also receives funds. We were fortunate enough to receive one of these grants recently. Thank you to Alcoa employee **Erica Bransky** for applying for a grant on the school's behalf. Erica is **Mr Crane's** partner.

The school was required to nominate a worthwhile project in order to qualify for the grant. **Mrs Kinal and Mrs Bell** wanted further improvements to the K/PP playground. Last year we installed more playground equipment and added limestone retaining walls. It was decided that a **bike track** would be of benefit to the students.

The **\$3000** and labour provided by Alcoa enabled this to be possible. A large contingent of Alcoa volunteers arrived on the weekend of 23rd and 24th June. The Alcoa volunteers included parents from the school as well as others. We even had a partner of an Alcoa worker volunteer her time on Sunday! We now have a fabulous bike track that includes speed humps, rumble strips and other interesting features, a wooden bridge, garden beds and wooden seats.

Thank you to all concerned. Your generosity and hard work have greatly enhanced the play area for our youngest students.



Above and right: Bridge building in progress.



Above: The cement mixer arrives and the wheelbarrow crew spring into action.

Below: The bridge is now complete and the cement path has been installed. What to do with left-over cement? Make a frog pond / bird bath and some turtles!



Left & below: Before!





*Above: Kylie uses her creative talents to make some turtles!
Below: The gravel arrives! More work for the wheelbarrow crew.*



Above: Grant organiser Erica Bransky adds some mulch to the garden beds.



Below: The bridge has been installed and Mr Warren adds some obstacles for the riders.



Thank you especially to our gardener **Geoff Warren**. Not only did he work extremely hard on the day but he also came up with the design, worked out the materials and quantities needed and organised the collection and delivery of all materials.

You are a treasure Mr Warren.

Tile Making Workshop

The **Dwellingup Community Compact** have been successful in applying for a grant from **Alcoa**. This grant supports a community project. Everyone would have heard the exciting news about the developments in Dwellingup that will result in our town being a **"Trails Hub"**. To complement this, it was decided by a sub-committee of the Compact to make and erect trail markers through the town to show the route of the Munda-Biddi bike trail and Bibbulmun Track.

Handmade tiles showing direction and identifying the respective trails will be affixed to bollards. Selected students from our school will be involved in all stages of making the tiles. Thank you to local artist **Patricia Hines** for contributing her expertise to this project.



Dirt Matters

The winter vegetables are growing despite the cold weather and so are the weeds!

This week students completed some weeding and applied fertiliser.



Below: Cameron and Jayden busily and happily weeding.



Day / Out of School Care

There is a need for Childcare in our community and this has been on the agenda for a long time. We have been thwarted in our efforts to provide Day Care through the school due to a variety of reasons. At present I am working with Sue Gilbert from A1 Fun Out of School Care to get something up and running. Naturally, she needs to know what the demand is for Day / Out of School Care in Dwellingup. Please complete the attached questionnaire and return to the front office. Please canvas others who may not receive this newsletter because naturally, the higher the indicated demand, the more viable it will be for Sue to provide a service here.

Punctuality / Attendance

One of the main predictors of success at school is regular attendance. Punctuality is also vital. If children arrive late the rest of the class are settled and working and the late child has the stress of not knowing what is going on. The other students are then disrupted whilst the late child catches up.



Regular attendance is vital ~ the table below highlights the cumulative effect of non-attendance.

Attendance Rate	If you miss...	That equals...	Which is ...	And, over 13 years of school, that's...
80%	1 day per week	40 days per year	8 weeks per year	Over 21/2 years
60%	2 days per week	80 days per year	16 weeks per year	Over 5 years

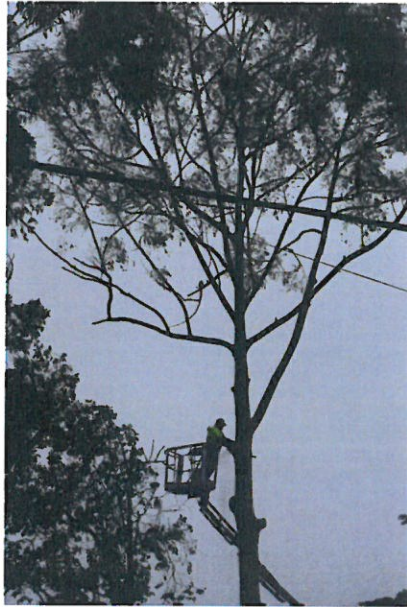
Congratulations to the following students who attended regularly last term:

Attendance Rate	Name
100%	Cameron Campbell Nigel Reid
95% - 99%	Ayden Armstrong Cowen Armstrong Luca Birmingham Ava Bucktin Eve Campbell Holly Carver Jayden Chapman Anne-Elise Douglas Lincoln Douglas Tayler Douglas Holley Goncalves Farrah Holster Bodhi Maddox-Collins Sean McCooke Ruben Morales Angela O'Malley Breeanna Reid Lucas Swiderski Max Swiderski Evelynn Tomlinson Kara Tovey Anika Vanelst Kaiden Vanelst
92% - 94%	Nate Fort Karly Goncalves

Dead Tree

Last week we had two huge trees removed from the verge near our canteen. One of the trees is the offending tree whose root system caused extensive damage to our canteen / sports shed rendering them unusable.

Now that the tree has gone, we are hoping for more action so that these areas can be restored for use. We admired the skill of the tree removalists. The trees were very tall, had large girths, it was a windy day and there were power lines close by. Well-done guys! **Mr Warren** is busily and creatively thinking up ideas of how we can use the logs that we salvaged from the operation.



Playgroup

Dwellingup Playgroup is based at our school. The 0-3 years is the age when brain development is at its peak and it is very important that children engage in quality play based learning.



Wednesday 9.00-11.00am
Room behind school Undercover Area

Community News

Cadets

Burn over and RUI training
and exercise.

Saturday 28th July



After School Bike Group

The “Dwellingup W.A. 100” is rapidly approaching (Saturday August 18th). A group of enthusiastic student riders has commenced training for the 14km event. Our group includes riders of all ages including a kindy student!

If you are interested, you are welcome to join us. We meet at the Blue Wren café at **8.30am** on a **Saturday** and the ride usually takes about two hours. All school aged participants (and their parents) are welcome. This activity is run under the auspices of the **Dwellingup Community Compact (DCC)**.

Thank you to **Peter White**, DCC Chairperson for his involvement in the ride and also for organising a free bike maintenance session. We also appreciate the bike riding tips provided by **Peter** and **John Cusack**, another adult associated with the ride.



Above: Many people travel from Perth to Dwellingup to ride in the bush. We are lucky to have the beautiful jarrah forest and riding trails on our door step! It's wonderful so many riders turned up for our ride!

Piano Progress



Left: Angela, Katie, Kara, Luca, Damon & Nate with Sharona. (Deegan absent).

Sharona Bower teaches piano to students who attend Dwellingup Primary School. The students were presented with certificates at the end of last term to recognise their progress and achievement.

Day / Before & After School Care

Expressions of Interest

There is a need for Childcare in our community and this has been on the agenda for a long time. We have been thwarted in our efforts to provide Day Care through the school due to a variety of reasons. At present I am working with **Sue Gilbert** from **A1 Fun Out of School Care** to get something up and running at the school. Naturally, she needs to know what the demand is for Day / Out of School Care in Dwellingup. Please complete the attached questionnaire and **return to the front office of the school.** Please canvas others who may not receive this newsletter because naturally, the higher the indicated demand, the more viable (and therefore possible) it will be for Sue to provide a service here. Please contact **Colleen Sing at the school on 9538 1026** if you require further information.

Please indicate the following:

I would access out of School Care at the following times / days of the week.

Type of Care	Time	Days	Ages of children
Before school care			
After school care			
Day care			

Name: _____ Contact no: _____

