

# DWELLINGUP CRIER



Produced by Dwellingup Primary School

Feb 15th 2019

*Established 1911*

**"Choose Respect"**

## Our Vegetable Garden

We are very grateful to **Mr Crane** for setting up reticulation in our vegetable garden. This enabled it to flourish over the long, hot summer. We are currently harvesting zucchinis, tomatoes and spinach. **Mr Crane** has also spread newspaper and mulch over all of the paths which has prevented weeds from growing. The K/PP/1 class are making a delicious and healthy zucchini slice next week.



*Left: Angela in the vegetable garden.*

*Below: Telitia and Lincoln are looking forward to working in the garden.*



### Dates to Remember:

**Sat 16<sup>th</sup> Feb:** Log Chop 9.00-5.00pm

**Wed 20<sup>th</sup>, Thurs 21<sup>st</sup> Feb:** "Creator Kids" STEM Incursion Yrs 4,5,6 (date change & late notice due to power outage).

**Thurs 28<sup>th</sup> Feb:** Yrs 2/3/4 Assembly

**Mon 4<sup>th</sup> Mar:** Labour Day (holiday)

**Fri 15<sup>th</sup> Mar:** Sculpture by the Sea Yrs 4,5,6

**Thurs 21<sup>st</sup> Mar:** Yrs 5/6 Assembly

**Thurs 4<sup>th</sup> Apr:** K/PP/1 Assembly

**Thurs 12<sup>th</sup> Apr:** Term 1 ends

**Sat 20<sup>th</sup> Apr:** Giant Pumpkin Competition

**Mon 29<sup>th</sup> Apr:** Term 2 commences

### Weekly Events at D.P.S.

**Wed:** Playgroup 9.00-11.00am

### Educational Websites at DPS:

[www.mathletics.com.au](http://www.mathletics.com.au)

[www.studyladder.com.au](http://www.studyladder.com.au)

[www.mylexile.com.au](http://www.mylexile.com.au)

## Making New Friends



*Back row: Tabatha, Lily, Abigail and Ava*

*Front row: Angela, Kara and Eve*

Mother rabbit (**Survivor**) gave birth to seven cute babies recently. These students enjoyed meeting them.

## Queries / Concerns / Feedback

I strongly encourage any parent to contact their child's teacher or myself if you have any queries or concerns **at any time**. No matter is ever considered too trivial and we are here to listen and respond. Your feedback / opinions / ideas are welcomed and are extremely helpful.





## Mr Warren's Latest Giant Idea



It was Mr Warren who came up with the idea of hosting a **Giant Pumpkin Competition** at the school. He has now come up with a giant pencil project. Whatever will he think of next?

*Above: Mr Warren with his giant pencils that will be used as a rose garden fence. He is trying to persuade Hemi to dig the holes.*

## Creator Kids

We are giving our students a wonderful opportunity to explore, wonder and create while preparing themselves for an exciting future! “Creator Kids” will integrate STEM subjects throughout a two day school incursion to set the students up to maximise their success in the future. A highly qualified teacher will lead the students through a wonderful path of self-discovery and help them develop high level strategies to succeed in the future. The students will:



- Discover and explore their passions.
- Identify “their world” problems.
- Create solutions.
- Understand commitment.
- Build products.
- Demonstrate goal setting.
- Embrace design and digital technology.
- Incorporate coding and robotics.
- Create strategies for resilience.
- Develop an understanding of basic marketing and bookkeeping.
- Gain experience in presenting their learning to an audience.

## Creator Kids Parents Night

*“Find out more about the Creator Kids program your children are participating in and why the focus on entrepreneurship, problem solving and critical thinking in education is vital to your child’s future”. (see attached flyer).*

We apologise about the short notice of the “Creator Kids” event, however, we found out about the power outage on Monday 25<sup>th</sup> only very recently. The only availability for a date change was this week. The parent information evening is open to parents of all year levels. See you there!

## A Word from the Chaplain



Picture from Melissa Machan from ‘first-grade-smiles.blogspot.com’

Hi Everyone,

It’s great to be back at Dwellingup Primary School for 2019. It has been wonderful to catch-up with students, staff, parents and caregivers again after the holidays. I would like to thank all of you for your warm welcome, all the hugs, and your kind words. I would like to remind everyone that this year I will be at school every Thursday and every second Tuesday. Just call the school to make an appointment to see me if you have any concerns about your child or if you just want to have a chat with me.

Lisa Ferraro

Chaplain

## Contributions

These funds support your child in the school and are used to purchase items such as sporting and art equipment.

Thank you to those parents who have already paid their contributions.

Contributions are **\$40.00** per student. Arrangements can be made to stagger payment if this helps.



## “Choose Respect” Marble in the Jar Certificates

*Luca Birmingham* ~ Listening carefully in class and applying concepts learned.

*August-Rose Butler* ~ Demonstrating respect for staff and for displaying a conscientious attitude.

*Lily Lamb* ~ For impeccable behaviour, displaying a conscientious attitude to all of her learning and for being kind and friendly.

*Sierra Miller* ~ Always listening carefully to instructions and completing her work carefully.

*Kaiden Vanelst* ~ For always being courteous, listening carefully to instructions and completing work cheerfully. You have developed an excellent work ethic Kaiden.

## CONGRATULATIONS



## Active Transport

Last week we included a photo of the large number of students who are choosing active transport to arrive at school.

We are pleased that some of our younger members of the school are choosing active transport as well!



*Left: Zeke rode his bike to school today!*

## Playgroup News

Dwellingup Playgroup is based at our school. The 0-3 years is the age when brain development is at its peak and it is very important that children engage in quality play based learning.



If you know of any newcomers to town with pre-kindergarten children, please tell them about the Playgroup or ask them to phone us.

Colleen Sing: **9538 1026; 0488 225 888**

**Wednesday 9.00-11.00am**  
**Room behind school Undercover Area**

**ALL WELCOME!**

## Giant Pumpkin Festival

This is one of the biggest events on the Peel Region social calendar and the biggest fund-raising event for our school. For those of you who don't know, last year over **15 000** people attended and we raised a whopping **\$27 000 000** for our school.

Our hard-working committee headed by our amazing P&C president **Warren Haugh** has planning well under way.

This event is held on:

**Easter Saturday**  
**Saturday 20th April**



Please see the attached letter from Warren Haugh, P&C President extraordinaire for more details!

## Community News

Community Dates to Remember:

**Sat 16<sup>th</sup> Feb:** Log Chop 9.00-5.00pm

**Sun 10<sup>th</sup> Mar:** “Dwellingup Creative” Dinner

**Sun 17<sup>th</sup> Mar:** Noble River Estate: “Maria, Marlene & Me”

**Sat 20<sup>th</sup> Apr:** Giant Pumpkin Competition

**Thurs 25<sup>th</sup> Apr:** ANZAC Commemoration RSL Hall

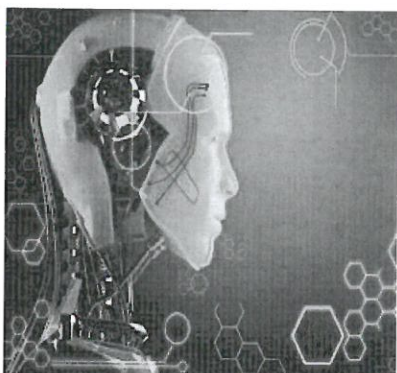
See attached fliers for further information on events listed above.





## A Parent Night to Remember

*Find out more about the Creator Kids program your kids are participating in and why the focus on entrepreneurship, problem solving and critical thinking in education is vital to your child's future.*



Parents are invited to this two hour workshop delivered by Brad Howard – Manager of Practical PD. Brad Howard is a passionate educator who has witnessed other education systems internationally, managed state and national companies, owned and operated his own businesses, created flexible rapid growth businesses and was once an Assistant Principal in the WA education system. Brad strives to make his presentations interactive, thought provoking and an expression of his passion for great education.

*This night allows parents an opportunity to look closely at the future and the impacts of Artificial Intelligence (AI), Robots, job replacement and globalisation.*

*Brad's talk promises to be thought provoking, mindset changing, collaborative, interactive and motivating.*

*Don't miss this opportunity to get a glimpse of the future and how to prepare you and your children for the reality of change!*

**Where:** Dwellingup Primary School

**When:** ~~Monday 25th February~~  
Wednesday 20th Feb.

**Time:** 7pm – 9pm

*(Changed due to power outage Mon 25th Feb).*





# DWELLINGUP PRIMARY SCHOOL P&C ASSOCIATION

Dwellingup Primary School  
Parents and Citizens Association  
ABN 24890011712  
10 Newton Street  
Dwellingup WA 6213

## 2019 Dwellingup Pumpkin Festival

On behalf of the Dwellingup Primary School P & C welcome to another fantastic year at this awesome school. For those families that are attending for the first time, a special welcome, I know you will enjoy your time here. For those returning, welcome back.

As most of you will know the Pumpkin Festival is organised by the P & C as its main fundraiser for the year. For the new families, have a look at our festival facebook page – Dwellingup Pumpkin Festival to get an idea about this event. For the last 2 years we have had around 11000 people attend so it is a big task for our small P & C to organise. We are however very proud of the event. Over the last 6 months there has been a very small group of parents planning the event, the funding applications, licenses, talking to the Shire and the nuts and bolts required to organise an event this size. Our first P & C meeting for the year is Tuesday 19<sup>th</sup> February at 2pm in the Staffroom at school. Here I will be able to update you on where we are at and what is needed moving forward. There are jobs available leading up to the day and on the day itself so we will find you something to do.

In the meantime you can also help out in the following way:

We are looking for the donation of empty Jars, hopefully filled with exciting items that a child would be happy to pay \$2 for. The items cannot be perishable or second hand. This stall is very popular and always sells out. Please deliver filled jars to the office. There will also be a box next to the lunch order area where you can leave empty jars from next week. If you are able to fill jars but do not have any, please take them from there.

Easter Egg Raffle. This is always popular. Next time you shop maybe buy an extra Easter Egg and drop it off at the office. The hampers that we ( Jody ) are able to create are always very exciting

White Elephant Stall. It's never too late to move on those unwanted items. Yes, we will even pick up locally. Remember, someone's unwanted item, maybe someone else's treasure. Please see KK/Pre Primary/ Year 1 if you have anything to donate or drop off at the school.

We also need Pumpkin Scones and Pumpkin Soup to be made. If you enjoy cooking please give this a thought. Contact the school if you need recipes. The soup especially can be frozen and thawed on the day. There will be further information re this. We also have a Bake stall on the day so baking is required for this. With the amount of people expected at the festival we can never have too much of these items.

Very soon we will have lists outside the classrooms where you can register your interest to volunteer on the day or for set up on the Friday. If yourself, a family member, a friend, or a neighbour wish to volunteer, please put yours and /or their name on this list. 1 Hour, 2 hours, all day – any time is greatly appreciated. As there are so many tasks to be completed, this year there will be only one list outside each classroom where you can write your name and the hours you are available for. You can also write down what you would prefer to do and we will do our best. We have wonderful members within the community that are not connected to the school that help out on the day which is fantastic. To staff a festival this size we need over 50 volunteers and with our small school this is always our biggest worry. Please consider keeping Saturday 20<sup>th</sup> April free and helping out. You will have some fun.

This is a Fundraising event so we are always looking out for sponsorship. If you or you know of someone that works for or owns a business that may be interested in sponsoring the event please let me or the school know. Cash sponsorship or items are very much appreciated.

Please only help if you are able to. The P & C understand that everyone's circumstances are different. This event is great for the school and community, and as a community we should all be able to enjoy it.

This year's festival is looking like the best yet. Awesome Pumpkins, Fantastic Music, Great entertainment, 100 Market stalls, 10 Food vans, P & C food and stalls – the list goes on. Maybe even Camel Rides. Please help the P & C out to succeed.

There will be further updates in the weeks to come. 65 days until Easter Saturday 20<sup>th</sup> April – Keep it free.

Thank you

Warren Haugh  
0428832473  
wazzahaugh@gmail.com





DWELLINGUP  
COMMUNITY  
COMPACT



DWELLINGUP  
Teenz

PRESENTS....

# FREE COMMUNITY HIP HOP CLASS

*A great way to connect in our community  
and have some fun!*

*Join The Dwellingup Community  
Compact for a Hip Hop Class followed by  
afternoon tea provided by Dwellingup  
Teenz.*

**28TH FEB  
7TH MARCH  
14TH MARCH  
21ST MARCH**

**1.30PM**

*Dwellingup Community Hall  
All ages welcome*





# DWELLINGUP

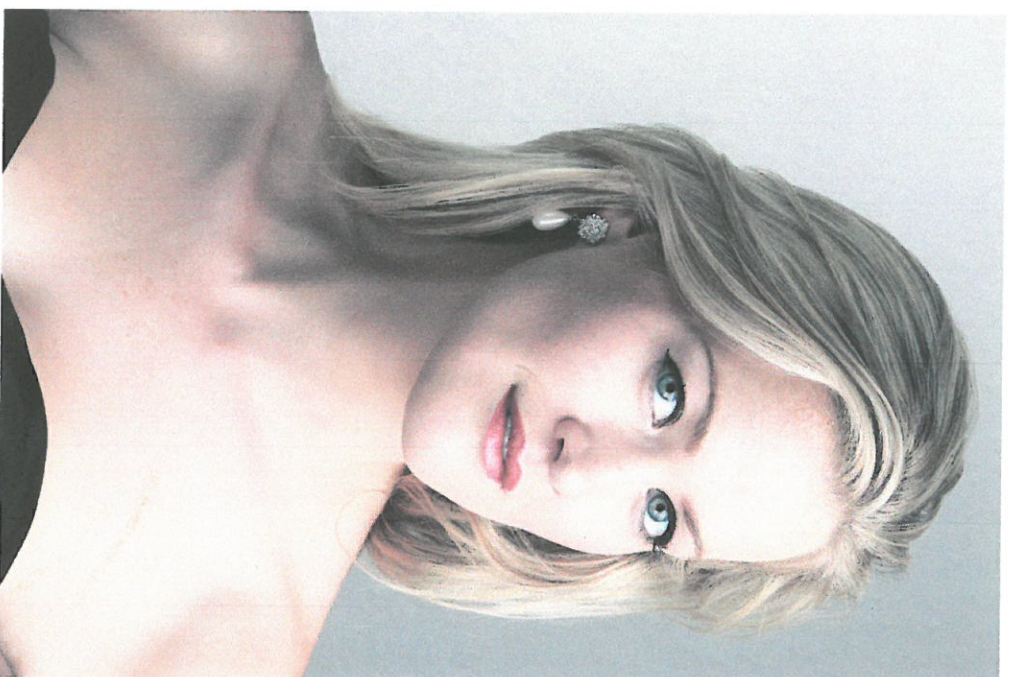
## LONG TABLE DINNER

Bring a plate of food to share,  
your drink of choice and enjoy an  
evening meeting your community!

10.03.19 | from 5pm  
The Dwellingup Hall  
McLarty Street

DWELLINGUP  
CREATIVE





## NOBLE RIVER ESTATE

presents

### ***Maria, Marlene and Me***

Sunday 17 March 2019

Brigitte Heuser, Mezzo-soprano

Michael Brett, Piano

A performance inspired by two extraordinary artists,  
Maria Callas and Marlene Dietrich

Spanning four centuries of music from Opera to Cabaret, in one evening under the stars at Noble River Estate

Enjoy a night of memorable music from an internationally acclaimed singer in a beautiful outdoor casual setting, with a choice of grassed sitting area or seating provided. BYO Supper, and a Bar selling wine, beer and soft drink will be open from 4pm. Venue opens at 4pm with performance starting at 5pm

**All proceeds to Friends of Cancer Council and  
Perth Blood Research Institute**

Noble River Estate, 503 River Road, Dwellingup  
Call 9538 1155 to book tickets at \$40 per person