



Produced by Dwellingup Primary School

May 8th 2020

Established 1911

"Choose Respect"

Dates to Remember:

Fri 29th May: Student Free Day

Mon 1st Jun: W.A. Day Holiday

Fri 3rd Jul: Term 2 ends

Mon 20th Jul: Pupil Free Day

Tues 21st Jul: Day 1 Term 3

Weekly Events at D.P.S.

Wed: Playgroup 9.00-11.00am (cancelled until further notice)

Educational Websites at DPS:

www.mathletics.com.au

www.studyladder.com.au

www.mylexile.com.au

Covid – 19

We are pleased that the Covid – 19 curve has substantially flattened and hope that this remains the case. It is great that we are able to teach our students 'face to face' and not by distance education. We were impressed with parents' home education skills which ensured that the students didn't fall behind.

I wish to also thanks the staff for preparing the home education boxes each week.

We are certainly not 'back to normal' yet as you can see by the "Dates to Remember" section above. Assemblies, NAPLAN, excursions, "Crunch & Sip" etc are not taking place and there are no volunteers in the school. Our cleaners **Barb Pelham and Robyn Warren** have done a super job cleaning throughout the day, every day.

It is also mandated that wherever possible parents do not come on site. Please call us from the gate if you require assistance. Also, there will be no lunch orders until further notice. Parents should not visit classrooms at any time. These measures are to

ensure children and staff safety so please support us with this.

During the week details of a research project was sent home. I have reattached the information to this newsletter.

Right: The "Golden Mop Award" for services to cleaning.

Below: Mrs Warren and Mrs Pelham in their PPE receiving their "Golden Mop Award" trophies for being extraordinary cleaners.



Above: Mr Jones, Eve and Karly presented a special item called "Sadie, the Cleaning Lady" to Mrs Warren and Mrs Pelham. ('Mature' Dwellingup residents will recognise John Farnham on the screen in the background.)

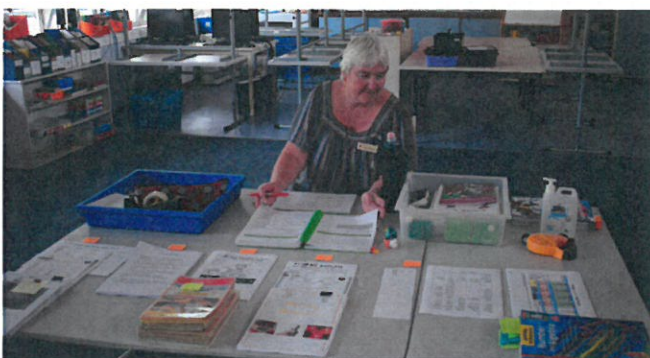


Left: Robyn Clarke, MLA, dropped off a care package which included a box of fruit, a card and a bag of chocolates for staff on Thursday. The inscription on the card read, "Thank you Colleen and team. We appreciate your flexibility and hard work during this rapidly changing situation."

Thank you Robyn!



Above: As we had very few students in the last week of term Mrs Bosanac co-ordinated a huge clean out of several storerooms. We are now in "The Year of the Declutter 4" and really feel that we are getting somewhere.



Above: "Distance Learning"! Mrs De Boer couldn't be at work so she gave the instructions to Mrs Jude Wagenaar who carried out all of the 'hands on' requirements to stock the 'work at home' boxes each week. This required Mrs Wagenaar to do a lot of work in her own time. Thanks for your dedication to the students Jude.

Staff Changes

As announced in the last newsletter, **Mr Jason Jones** has commenced as the teacher in the year 4/5/6 class. He has enjoyed getting to know his students as they have gradually returned to school.



Above: Mr Jones with Lincoln, Deegan, Cowen and Karly.

We welcome **Mrs Kerry Sadler** back as the teacher of the years 1/2/3 class. **Mrs Sadler** wasn't gone for very long! **Mrs Sadler** is replacing **Mrs Taylah De Boer** who was required to go on maternity leave early due to Covid – 19. It's great having you with us Kerry and we are all very impressed with your commitment and flexibility.

Goodbye and Good Luck

We have been delighted to have had **Rhys and Fern** and their parents **Meg and Dan** in our school community this year. We wish you all of the very best in the future.



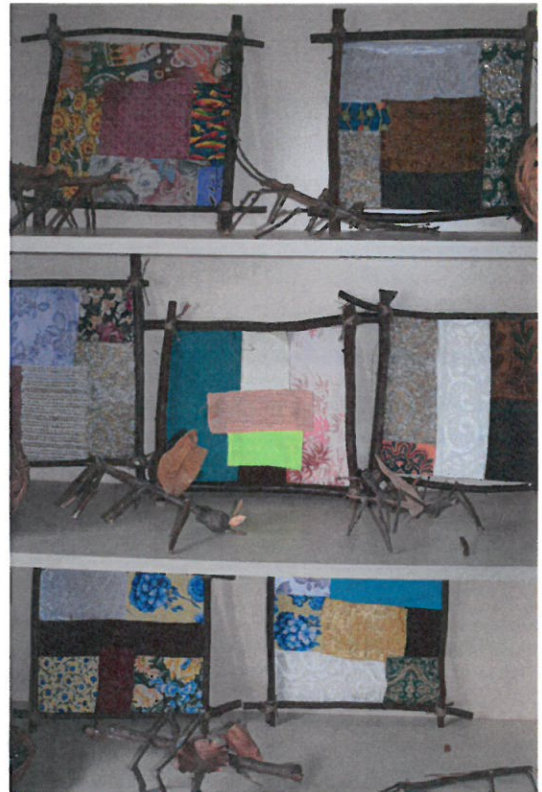
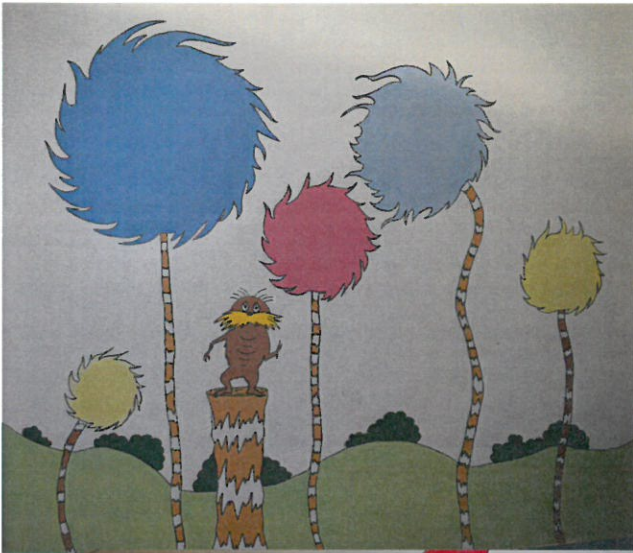
Right: Fern and a friend on her last day at Dwellingup PS.

Since You've Been Gone...

It was wonderful for us to come back to some wonderful additions to our school. We certainly have some talent among our staff! There is a large wall in the girl's toilets and it was suggested by some girls that a picture could be placed on it. It was decided that Dr Seuss is inspirational as well as colourful and vibrant so some of his designs were chosen. **Mrs Juliet Lamb** completed the stunning illustrations pictured below. We thank **Juliet** for spending time during the holidays to complete the illustrations. **Juliet** also painted a scene from **Alice in Wonderland**.



More Beautiful Artwork



Every Friday afternoon the students in years PP-complete art with **Mrs Wendy Bell** in the pre-primary. These collages are so stunning that we decided to display them in the front office. You will see them when the school is open for parents again. We appreciate your talent **Wendy** and acknowledge the talent of the students. **Wendy** is missing **Mrs Laine Vanelst** as we are not permitted to have volunteers at present.

More Fabulous Artwork



Last term the K/PPs studied the topic “Australia”. Mrs Kinal and Mrs Bell were very impressed with the amount of effort that Arli put into the completion of her boomerang. It is very impressive and she is justifiably proud!

School Grounds Update

Every time we come back from holidays Mr Geoff Warren has at least one surprise for us. Geoff’s imagination seems to have no bounds!

This time the surprise was a “garden bed”. The chrysanthemums are the pillow and the other plants will grow into the quilt.



In addition to the “garden bed”, the school now has a “freaky forest” (pictured in the next column).

A few years ago we had a “working bee” and several large marri trees were cut down in the front of the Playgroup room. As you know, when eucalypts are cut down, lignotubers grow from the stump. Geoff trimmed these to create the “freaky forest”



Configuration of the School Day

Last term we announced that we were reconfiguring the school day this term. The change is underway and we are already seeing the benefits with the extended morning Literacy and Numeracy time.

We appreciate that parents have adjusted food provision accordingly and are remembering to send a serve of fruit or vegetables for the “fruit break” each day. An apple, for example, can take quite a long time to munch through and can be left uneaten at recess or lunchtime.

8.30am	Classrooms open (no change)
8.50 am	School starts (no change)
8.50 -10.00am	Period 1
10.00 – 10.10am	Fruit Break
10.10am – 11.05am	Period 2
11.05 – 11.25am	Recess (changed from 10.50am - 11.10am)
11.25 – 12.25	Period 3
12.25 – 1.25	Period 4
1.25pm – 1.55pm	LUNCH (changed from 12.30pm – 1.00pm)
1.55 – 3.00pm	Period 5
3.00pm	Hometime (no change)

Autumn Colour It's a shame that we have measures in place that don't permit people to come onto school grounds as some stunning autumn colour can be seen at the moment. Of course pictures aren't as good as the real thing!



Congratulations

Congratulations to **Megan Warren** and her partner **Aohan** on the safe arrival of **Harley Robert Kyne**. **Megan** attended Dwellingup Primary School and her parents are our cleaner **Robyn (nanna)** and gardener **Geoff (grandad)**.



Interesting Paths



Above: Mr Warren works wonders with a pile of mulch.

Tree loppers have been dumping large piles of mulch outside the Playgroup room. Mr Warren has created a series of interesting paths weaving in and out the trees. The K/PP students had a wonderful time exploring last week.

Relationships Australia

This organisation provides a range of counselling options targeted at adults, children and families. It is a community based, not for profit organisation. This organisation has an office in Mandurah and their contact number is **1300 364 277**.

Relationships Australia

Wishing all of the mothers a Happy Mothers' Day for yesterday.

Dear Parent / Carer

I am writing to advise that our school has been invited to participate in [research](#) the WA Government is undertaking in partnership with Telethon Kids Institute. The research is part of DETECT: a larger study of particular groups in our community to determine the prevalence of COVID-19 in Western Australia. Education has been prioritized for inclusion.

Approximately 80 public schools across Western Australia will participate in the research. They represent a cross section of the community and include primary, secondary, education support, metropolitan and regional schools, and residential colleges.

The study will be rolled out across schools over the next few weeks. Participation is voluntary and consent will be sought from staff and parents, as well as students for the psychosocial survey component.

As part of the research, staff and students from 40 schools will be tested for COVID-19 at monthly intervals over a period of at least three months. These schools will be randomly selected by the researchers. All 80 schools will participate in the online survey component, providing information on how COVID-19 is impacting their physical, social and emotional wellbeing. All students, staff and parents would be encouraged to participate and TKI will work directly with schools.

I will provide further information, including a fact sheet from TKI, and consent forms in the coming days.

Our school's involvement in this research will make a valuable contribution to better understanding the extent of COVID-19 in Western Australia and what measures are required to keep our communities safe during the pandemic.

If you have any questions, please contact me on 9538 5100 for more information.

Kind regards



Colleen Sing
Principal
Dwellingup Primary School
4th May 2020