



Produced by Dwellingup Primary School

May 5th 2023

Established 1911

"Choose Respect"

Dates to Remember:

Fri 12th May: Blue Light Disco 5.00pm – 8.00pm

Sun 14th May: Mothers' Day

Mon 15th May: Indonesian Incursion Years 3/4/5/6

Tues 16th May: K/PP Assembly

Fri 19th May: Walk to School Day

Fri 19th May: P & C Day

Wed 24th May: Nat. Simultaneous Storytime K/PP

Fri 26th May: Olden Day Dress Up Day

(Dwellingup Hospital Centenary)

Sun 28th May: Dwellingup Hospital Centenary

Tues 30th May: Years 4/5/6 Assembly

Wed 31st May: Bindjarep Park – Aboriginal Cultural Excursion K – 6

Thurs 1st Jun: Football Clinics Years PP – 6

Thurs 8th Jun: Football Clinics Years PP – 6

Tues 13th Jun: Years 1/2/3 Assembly

Mon 5th Jun: W.A. Day Holiday

Fri 30th Jun: Term 2 ends.

www.mathletics.com.au

www.studyadder.com.au

Weekly Events in Dwellingup:

Sat: "Bush Riders" 9.00am "Waypoints Cafe"

Mon: Bike Skills Oval 3.00pm

Tues: Playgroup 9.00 – 10.30 am

Parent Meetings / Queries / Concerns / Feedback

I strongly encourage any parent to contact their child's teacher or myself if you have any queries or concerns **at any time**. The school number is 9538 5100; my mobile number is 0488 225 888.

No matter is ever considered too trivial and we are here to listen and respond. Your feedback / opinions / ideas are welcomed and are extremely helpful.



"Choose Respect" Marble in the Jar Certificates

Arlo Bell ~ Listening carefully and remembering how to tell the difference between jarrah and marri trees.

Brodie Dimasi ~ Putting the maximum amount of effort into spelling and putting so much detail into drawing his banksia leaf that he stayed after the bell had gone.

Logan Every ~ "I love coming to school and I love learning." Displaying a positive attitude to school!

Bella Goncalves ~ Putting in an outstanding amount of effort into HASS activities.

Breanna Reid ~ Working extremely hard in maths and making significant improvements as a result.

Arli Sellenger ~ Not making a fuss and being forgiving when significantly annoyed.

Ambrosia Sheridan ~ Working consistently well day in, day out and making wonderful progress across the learning areas as a result.

Nash Vuletic ~ For his fabulous interest, engagement and thinking when learning about the tress in the jarrah forest.

CONGRATULATIONS!

CHOOSE RESPECT
RESPECT IS TO TREAT WITH CARE AND CONSIDERATION



Wishing all of our mums a wonderful day next Sunday.

Dwellingup Primary School – Standing Tall and Proud

Year 6

The parents and staff of students in year 6 find it difficult to believe that they are now into their third last term at primary school. Our 6 students: **Luca Coxon-Zahra, Nate Fort, Logan Reid, Lenny Thompson, Indi Pollard and Capri Sellenger** are proving to be outstanding student leaders. They can always be seen being helpful and responsible, supporting others and generally consistently modelling the values of our school.

In term 1 they engaged in a leadership event with year 6 students from other schools and they have a range of activities to look forward to.

Transition

Pinjarra S.H.S. run a very effective program that ensures a 'seamless' transition to secondary school. This program commenced on Friday with a visit from **Ms Fiona Davidson**, a deputy principal and **Summer**, the gorgeous Pinjarra S.H.S. support dog. Fiona talked to the students about secondary school and was very impressed with the questions that they asked. These visits continue with the next visit involving Pinjarra S.H.S. students. In term 4 there is a **Small Schools' Activity Day** and then our students travel by bus to Pinjarra S.H.S. to engage in two days of secondary school.



Above: It was decided to hold the students first Transition event at Longriders Café as it is such a special occasion. The students were treated to a milkshake in appreciation of their amazing behaviour and support that they give to everyone. They are pictured with Ms Davidson and Summer. (We hope Summer got a bowl of milk.)

Parliament House Lunch with Robyn Clark M.L.A.

Robyn has invited our students to Parliament House next term where they will be given a guided tour and then a silver service lunch in the beautiful heritage dining room.

Camp A meeting was held with parents on Friday to discuss camp. The destination hasn't been finalised.

Camp Fund-Raising

\$520 for the camp was raised at the Black Dog event held last term.



Above: The students present Tania and Alan at Longriders with a certificate of appreciation for the enormous level of support they provided to their fund-raising event as well as to the Black Dog organisation. The very beautiful Summer looks very impressed.

Students came up with other fabulous fund-raising ideas as did **Mrs Holster, Mr Carter and the parents**. We are very keen to involve the students in fund-raising, rather than taking the easy path of applying for a grant.

One suggestion was a firewood raffle. The parents had the wonderful idea of the students helping the parents and **Mrs Sing and Mr Carter** to go out to the bush after school and get the load of wood. **Mrs Holster** has planned baking using pears picked at school and olives picked and pickled at school. A stall will be held outside the shop to sell the produce and raffle tickets for their load of wood. There are other fantastic ideas that you will hear about later.

“Talk for Writing”

Years 1/2/3



To introduce the unit “**Alfie’s Star**” the years 1/2/3 students used **Vincent Van Gogh’s “Starry Night”** as inspiration to appreciate our beautiful starry skies. Students had the opportunity to use chalk pastels and practice using short strokes on black card to create their version of the famous painting. We think they are masterpieces!

Years 4/5/6

An exciting Scavenger Hunt using **Alice in Wonderland** as a theme resulted in teams searching for three hidden keys.



Above: Indi, Alby, Alby & Luca deciphering their clue.

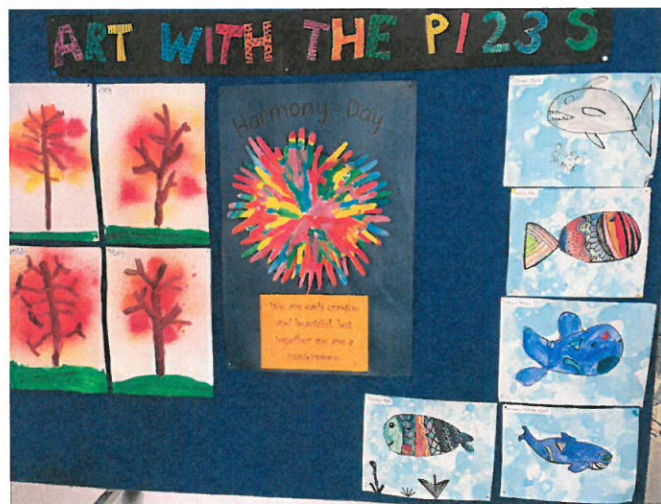
Once all the clues and keys were discovered students received their invitation to the Tea Party complete with Nate’s great, great, great grandmother’s embroidered tablecloth and china belonging to three other generations of his grandmothers. The students enjoyed Milo in teapots, sandwiches, biscuits and jam tarts for morning tea!



*Right: Staff are enjoying this lovely “**Mad Hatter’s**” centrepiece that got left after the party.*



Art With the PP/1/2/3s



Thank you to **Mrs Bell** for organising a display of gorgeous art work in the passage.

Dwellingup ‘100’ UCI Event



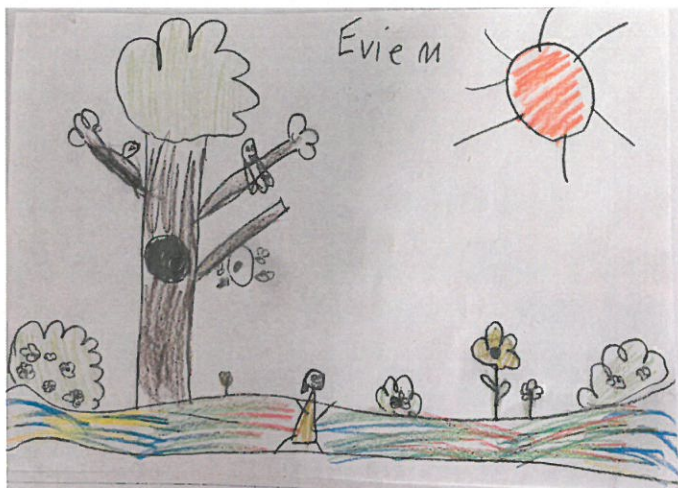
We are collecting old bicycles and bicycle wheels for some bike related projects that are being planned for the UCI event. We are delighted that the students and staff came up with so many fabulous projects that involve recycling.

"Dirt Matters"

Last week students in PP/1/2/3 talked about ways to care for and respect the bush. We talked about reducing our 'footprint' and also that endemic animals such as kangaroos have soft padded feet that minimises harm to the environment unlike introduced animals that have hard hooves. In other words, we have to tread very carefully in the bush.

The students thought of some very caring and respectful rules and drew beautiful pictures:

Don't step on plants. Respect the animals. Don't kick anything. My picture is of me walking on a path. Evie M



I am sitting down looking at the flowers next to the creek. I am not picking them. Byron

I am looking at the flowers in the bush but I'm not picking them. Tahni



What A Good Idea!

"I think the school should have a place at lunch where you can make things."

You may remember that students recently completed a survey including making "Two stars and a wish". Last week students created some interesting structures using plastic cups.



Left: Macy and Lily concentrated fully when constructing a plastic cup triangle.

Recycling / Charities

Please bring in obsolete mobile phones (recycling); batteries (safe disposal); stamps (Rotary sell them for charity and have raised \$90 000 in 23 years); toothpaste tubes and old toothbrushes. There are collection bins in the passage.



Students who bring in items receive a raffle ticket which goes into a weekly draw for a milkshake. Recipient is as follows:

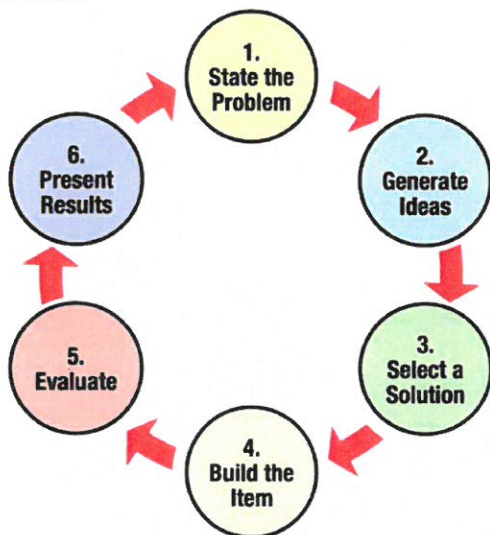
Week 2: Logan Reid

Milkshakes are kindly donated by Longriders' Café.

Design & Technology with Mrs Holster

This term in **Design and Technology** we are focusing on woodwork. Prior to having children, I taught Design and Technology at both Northam Senior High School and Pinjarra Senior High School.

We started by learning about the Design Process. The students were really engaged in the conversation about what design is, when it is used in 'real life' and why the Design Process is necessary. Below is a diagram of the Design Process:



The classes started on two projects. The years 1, 2, 3 classes spent two lessons designing and building a Marble Maze. This was a quick project that allowed students to create, evaluate, and redesign quickly. They have done an amazing job and came up with much more complex designs than was expected.



Left: Otis constructed a complex marble maze.

The years 4, 5, 6 class have been learning about hydraulics and some of the practical applications of hydraulics. We have been using a hydraulics kit to produce a basic hydraulic claw mechanism. This week the students will be challenged to incorporate their claw into a hydraulic arm that will allow them to extend and pick up an object.



Above: Sienna and Anika completing their challenge.

Community News

Blue Light Disco

Sergeant Jody and Senior Constable Simon are very excited to announce our next **Blue Light Disco** 5pm-8pm **Friday 12th of May 2023**.



The theme is 80's Disco and we encourage everyone to dress up in their best 80's costumes. Parents, break out the leg warmers, stone washed denim and fluoro because you are welcome to stay and relive your youth (or your parent's youth!) with us.

We would love some parent volunteers too – if you are interested, please email dwellingup.pol.stn@police.wa.gov.au if you can lend a hand for a few hours. For just a gold coin donation you will be dancing, playing games and with any luck, winning some prizes.

Dinner will be provided, and the canteen will be stocked with drinks and snacks. Sadly, this will be Sergeant Jody's last Blue Light Disco in Dwellingup before she moves on to her next station at Fitzroy Crossing so she is super excited to see you all there for one last crazy dance!

Bike Skills

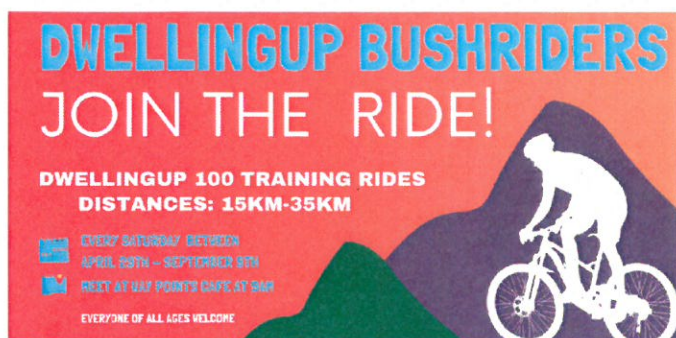
Thank you to **Harley Hanstrum** for running Bike Skills on Monday afternoons this term for adults and children.



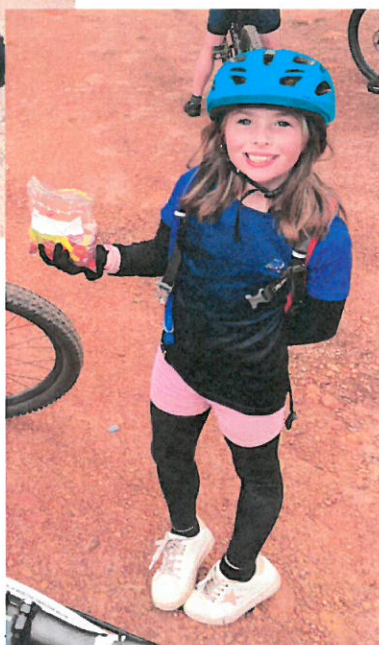
Dwellingup Bush Riders

Thank you to **Harley Hanstrum** and his helpers for organising this event and in doing so promoting healthy, active lifestyle choices.

SATURDAY 9.00am
WAYPOINTS CAFE



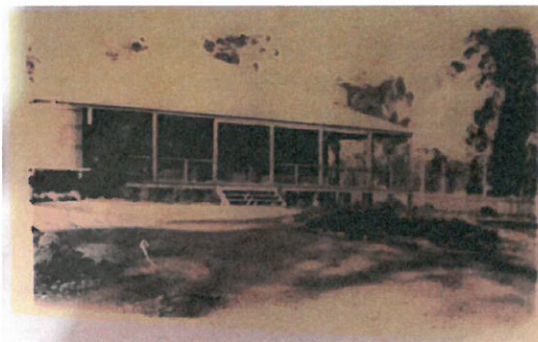
Left: Each week a leader is appointed. Arlo was a fantastic leader who kept us safe, encouraged us and made sure we didn't get lost!



Right: Every week Lily revives us with lolly snakes when energy starts to flag halfway through the race. Last year she was the deserving recipient of the "Most Caring Team Member" award.

Dwellingup District Fallen Soldiers Memorial Hospital Commemoration

Thank you to the hard-working committee who have been organising this event that commemorates an important aspect of Dwellingup's pre 1961 bushfire history. Please save this date:



Sunday 28th May 2023
From 1.30pm
Old Nursing Post

Playgroup News

This term children at Playgroup are participating in activities related to transport.

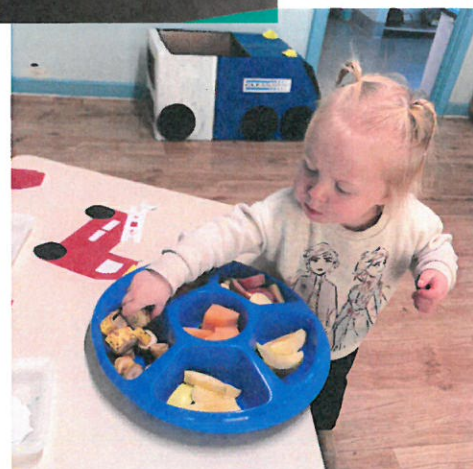


Riley made a fabulous fire truck and then enjoyed some fruit.

Tuesday

9.00am

All welcome.





REINVENTING YOUR 10c CONTAINERS

| CONTAINER TYPE | % OF RETURNED CONTAINERS | RECYCLED INTO | MAIN DESTINATIONS |
|--|--------------------------|--|---|
|  PET Plastic Beverage Bottles | 22% | » Recycled PET beverage bottles (clear bottles only) » Food packaging » Shoes » Pilot pens | Australia, Malaysia, Germany, Korea |
|  GLASS Glass beverage bottles, including juice, beer, soft drink | 30% | » Recycled beverage bottles » Road base » Pipe base underlay | Australia |
|  ALUMINIUM Aluminium beverage cans | 45% | » Recycled beverage cans » Electronics » Building products » Kitchen foil » Takeaway packaging | Korea, Greece, India Australia - potential future outlet |
|  HDPE Flavoured milk bottles <1ltr Pure fruit juice < 1 ltr Up to 90% pure juice < 3 ltrs | 1% | » Furniture » Kitchen bins » Construction material » Manufacturing equipment | Australia, Malaysia, Taiwan |
|  LIQUID PAPER BOARD Flavoured milk, coconut water <1ltr, non-foil lined juice boxes | 2% | » Recycled cardboard » Tissue paper » Recycled paper » Construction board | Spain, pursuing Australian options as capability is established |
|  STEEL Steel beverage cans | <0.1% | » Steel cans » Utensils » Construction materials | Korea, India, Japan, Australia |
|  OTHER Juice pouches, Juice boxes- foil lined, Cask-spirit-based < 3 ltrs | <0.1% | » Cardboard outers: Recycled paper » Juice pouches: Plastic furniture » Cask Inners: Creates PolyAl used in construction and logistics pallets | Spain, pursuing Australian options as capability is established |
|  BOTTLE LIDS | | » Rombus grid for cement building pads » NovaPlas construction components | Australia - Perth |

MOST ALUMINIUM, GLASS, PET, HDPE, PAPERBOARD AND STEEL DRINK CONTAINERS BETWEEN 150ML AND 3L QUALIFY FOR A 10c REFUND.



LIDS OFF PLEASE